

NOBANIS – Invasive Alien Species Fact Sheet

Phytophthora ramorum

Author of this species fact sheet: Anna Poimala and Arja Lilja, Finnish Forest Research Institute, Vantaa Research Unit, PO Box 18, 01301 Vantaa, Finland; +358 40 801 5377 ; anna.poimala@metla.fi

Bibliographical reference – how to cite this fact sheet:

Poimala, A. & Lilja, A. (2013): NOBANIS – Invasive Alien Species Fact Sheet – *Phytophthora ramorum*. – From: Online Database of the European Network on Invasive Alien Species – NOBANIS www.nobanis.org, Date of access x/x/201x.

Species description

Scientific names: *Phytophthora ramorum* Werres, De Cock & Man in't Veld, Oomycetes, Chromalveolata.

Synonyms: None.

Common names: Twig and leaf blight (EU), Ramorum leaf blight (North America), Sudden Oak Death= SOD (North America), tamme-äkksurm (EE), maladie de l'encre des chênes rouges (FR), mort subite du chêne (FR), tammen äkkikuolema (FI), europæisk visneskimmel (DK, European isolates) / californisk visneskimmel (DK, North American isolates), Plötslig ekdöd (SE), Plötzliches eichensterben (DE), Nagła śmierć dębu (POL).



Fig 1. Sporangia of *Phytophthora ramorum* in soil extract water, photo by Arja Lilja.



Fig 2. Branched dendroid-like hyphae of *Phytophthora ramorum* on the bottom of an agar plate, photo by Arja Lilja.

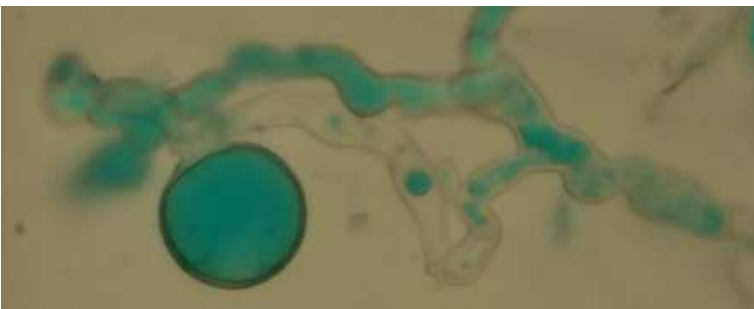


Fig 3. Clamydospore of *Phytophthora ramorum*, photo by Arja Lilja.

Species identification

Phytophthora ramorum is a heterothallic species characterized by abundant production of chlamydospores and elongate, ellipsoid, deciduous sporangia. The mean sporangium length was $43.6 \mu\text{m} \pm 5.3$ with a range from 20-79 μm , and the mean sporangium width $23.9 \mu\text{m} \pm 2.6$ with a range from 12-40 μm in measurements done by Werres and Kaminski (2005). Oogonia with amphigynous antheridia were produced by pairings with *P. cryptogea* Pethybr. & Laff and other heterothallic *Phytophthora* species representing opposite mating types A1 or A2 (Werres *et al.* 2001, Werres and Kaminski 2005).

There are four clonal lineages of *P. ramorum*; EU1 and EU2 in Europe, as well as NA and NA2 in North America. Before 2012, all isolates found in Europe belonged to one lineage (EU1) and represented predominantly A1 mating type. However, seven isolates have been identified in 2012 to represent a new lineage, EU2. These isolates originated from Northern Ireland and western Scotland, from Japanese larch in addition to three other host plants (Van Poucke *et al.* 2012). Also three isolates of A2 mating type in EU1 lineage have been identified (Werres and De Merlier 2003, Vercauteren *et al.* 2011a).

In North America, NA1 is responsible for sudden oak death and is the most common lineage in US nurseries (Goss *et al.* 2009a, b). Isolates belonging to the NA2 genotype have also been found in some US nurseries, but it is the most common lineage in Canadian ornamentals (Goss *et al.* 2011). Most North American isolates represent A2 mating type, but a few isolates of *P. ramorum* of the A1 type have been reported from horticultural nurseries (Hansen *et al.* 2003).

The EU phytosanitary legislation (Commission Decision 2002/757/EC) concerning plant import distinguishes between European and non-European isolates of *P. ramorum*.

Native range

Phytophthora ramorum has most likely been separately introduced into North America and into Europe (Rizzo *et al.* 2005). *P. ramorum* is phylogenetically closely related to and shows various common features with *P. lateralis* Tucker & Milbrath, and thus these species are likely to share a common region of origin. Recent findings of *P. lateralis* in an old-growth forest of *Chamaecyparis* in Taiwan (Webber *et al.* 2012, Brasier *et al.* 2010) suggest that the geographic origin of *P. ramorum* is also likely to be East Asia.

Alien distribution

History of introduction and geographical spread

In 2001, a new *Phytophthora* associated with a twig blight disease on *Rhododendron* and *Viburnum* in Germany and Netherlands was described as a new species, *P. ramorum* (Werres *et al.* 2001). Later it was found to be responsible for the Sudden Oak Death disease (SOD) of *Quercus* and *Notholithocarpus* spp. in California, USA (Rizzo *et al.* 2002, Kliejunas 2010). The spread of *P. ramorum* in North America has been very rapid. The disease was first discovered on *Notholithocarpus* spp. near Mill Valley in 1995, and since then it has spread throughout the coastal counties around the San Francisco Bay area where most of *N. densiflorus* (Hook. & Arn.) Manos, Cannon & S.H. Oh, *Q. agrifolia* Née, and *Q. kelloggii* Newberry trees have died (Rizzo *et al.* 2002, Davidson *et al.* 2002, 2005). The disease is currently present also in Oregon and Southwestern Canada (Davidson *et al.* 2005, Hansen *et al.* 2008, Kliejunas 2010).

P. ramorum has been found mainly in nurseries and garden centres in many European countries, *e.g.* in Belgium, Croatia, Czech Republic, Denmark, Finland, France, Germany, Greece, Ireland, Italy, Lithuania, Norway, Poland, Serbia, Slovenia, Spain, Sweden, Switzerland and the UK (Werres *et al.* 2001, Delatour *et al.* 2002, Moralejo and Werres 2002, Orlikowski and Szkuta 2002, De Merlier *et al.* 2003, Heiniger *et al.* 2004, Orlikowski *et al.* 2004, Pintos *et al.* 2004, Zerjav *et al.* 2004, Orlikowski 2005, Swedish Board of Agriculture 2011, Herrero *et al.* 2006, Husson *et al.* 2007, Bulajić *et al.* 2010, Lilja *et al.* 2007, EPPO 2011, Tsopelas *et al.* 2011). In Estonia *P. ramorum* has been found repeatedly since 2006 during border control but it has never been found in nature or in nurseries (Agricultural Board of Estonia, 2010). In the UK and Norway, also wild bilberry samples, collected from heathland and a semimanaged park, respectively, have been found positive for *P. ramorum* (DEFRA 2010, Herrero *et al.* 2011).

In the UK and the Netherlands *P. ramorum* has also been found on mature trees (Brasier *et al.* 2004, Anonymous 2004), but before 2009, always in the proximity of *Rhododendrons*. In 2009, *P. ramorum*

was reported for the first time from a semi-natural environment and a conifer species causing widespread dieback and mortality of *Larix kaempferi* (Lam.) Carr. (Japanese larch) in southwest England. It was subsequently detected on the same tree species in Wales, Northern Ireland and the Republic of Ireland (Brasier and Webber 2010). It has also been found on *Larix decidua* P. Mill. (European larch). Before the disease epidemic on larch, *P. ramorum* had been considered more or less harmless to conifer species. The pathogen represents predominantly the EU1 lineage, so the recent “Sudden Larch Death” is probably the result of a host jump, and not an introduction of a new *P. ramorum* genotype. The new lineage EU2 from Northern Ireland and western Scotland (from Japanese larch plus three other host plants) however, probably represents a second and more recent introduction to Europe than EU1 (Van Poucke *et al.* 2012).

Pathways of introduction

It is believed that *P. ramorum* has entered western North America and Western Europe in the late twentieth century, and imported, infected ornamentals have been the main introduction pathway. The mating type and lineage distribution suggest more than one separate introduction into Europe and into North America from a third location (Ivors *et al.* 2006, Prospero *et al.* 2007, Mascheretti *et al.* 2008, Goss *et al.* 2011, Grünwald *et al.* 2012). Migration from Europe to North America has been shown to be more likely than bidirectional migration (Goss *et al.* 2011).

Alien status in region

In Europe, *P. ramorum* was first found on *Rhododendron* and *Viburnum*, but later it has been isolated on a variety of plant genera and species, e.g. *Arbutus*, *Calluna vulgaris* (L.) Hull, *Camellia*, *Hamamelis*, *Kalmia*, *Laurus*, *Leucothoe*, *Parrotia*, *Photinia x fraseri*, *Pieris*, *Syringa*, *Vaccinium myrtillus* L. and *V. vitis-idaea* L., (Orlikowski and Szkuta 2002, Werres and De Merlier 2003, Beales *et al.* 2004a, Beales *et al.* 2004b, Husson *et al.* 2007, Herrero *et al.* 2011). In 2003, the pathogen was found on *Quercus falcata* Michx. in the UK, and afterwards on e.g. *Fagus sylvatica* L., *Fraxinus excelsior* L., *Quercus ilex* L., *Q. cerris* L., *Q. rubra* L., *Castanea sativa* Mill., *Taxus baccata* L., *Nothofagus* and *Aesculus hippocastanum* L. (Brasier *et al.* 2004, Lane *et al.* 2004, Anonymous 2004, Orlikowski *et al.* 2004, Orlikowski 2005, Sansford *et al.* 2010, DEFRA 2010). In 2009 the first conifer genus, *Larix*, was added to the host list following the extensive epidemic on Japanese larch in the UK (Brasier and Webber 2010).

In North America, tree hosts are besides *N. densiflorus*, *Q. agrifolia*, *Q. kelloggii* and *Q. wislizeni* A.DC., species such as *Q. chrysolepis* Liebm., *Umbellularia californica* (Hook. & Arn.) Nutt., *Sequoia sempervirens* (D. Don) Endl., *Pseudotsuga menziesii* (Mirb.) Franco, *Abies grandis* (Douglas ex D. Don) Lindley, *Acer macrophyllum* Pursh and *Aesculus californica* (Spach) Nutt. The pathogen has also been found on *Arbutus menziesii* Pursh, *Arctostaphylos manzanita* Parry, *Camellia* spp., *Corylus cornuta* Marsh., *Heteromeles arbutifolia* (Lindl.) M.Roem., *Lonicera hispidula* (Lindl.) Dougl. ex Torr. & Gray, *Loropetalum chinense*, *Maianthemum racemosum* (L.) Link, *Pittosporum undulatum* Vent., *Rhamnus californica* Eschsch., *Rhododendron* spp., *Rosa gymnocarpa* Nutt., *Rubus spectabilis* Pursh, *Toxicodendron diversilobum* (Torr. & A.Gray) Greene, *Rhamnus purshiana* DC., *Trientalis latifolia* Hook. and *Vaccinium ovatum* Pursh. (Davidson *et al.* 2002, Goheen *et al.* 2002, Rizzo *et al.* 2002, Knight 2002, Hong 2003, Hüberli *et al.* 2004, 2005, Murphy and Rizzo 2003, Hansen *et al.* 2005, Maloney *et al.* 2005, Vettraino *et al.* 2006, Blomquist *et al.* 2012, USDA 2012).

Today over 40 genera have been susceptible to this pathogen in inoculation trials (Denmann *et al.*

2005, Hansen *et al.* 2005, Tooley and Kyde 2007, Moralejo *et al.* 2009). Among the tested plants a few tree species have had very low disease incidence: *Populus tremuloides* Michx., *P. trichocarpa* x *P. deltoides*, *Pinus contorta* Douglas, *P. ponderosa* Douglas ex C.Lawson, *P. nigra* var. *maritima*, *P. sylvestris* L., *Salix hookeriana* Barratt ex Hook. and *S. lucida* Muhl. (Denmann *et al.* 2005, Hansen *et al.* 2005). In an inoculation experiment with Iberian tree species, only *P. pinaster* Aiton, *P. nigra* J.F.Arnold and *P. sylvestris* were ranked from resistant to slightly susceptible according to lesion size (Moralejo *et al.* 2009). Highly susceptible broad-leaved potential host species identified by inoculation tests include *Cornus nuttallii* Audubon, *Prunus emarginata* (Dougl. ex Hook.) Eaton, *Quercus alba* L., *Q. canariensis* Willd., *Q. prinus* L., *Q. pubescens* Willd., *Q. pyrenaica* L., *Q. faginea* Lam., *Q. suber* L. and *Ulmus procera* Salisb. (Denman *et al.* 2005, Hansen *et al.* 2005, Tooley and Kyde 2007, Moralejo *et al.* 2009). *Acer monspessulanum* L., *A. pseudoplatanus* L., *A. saccharum* Marsh., *Alnus glutinosa* L., *A. rubra* Bong., *Betula pendula* Roth., *Carpinus betulus* L., *Corylus avellana* L., *Ilex aquifolium* L., *Juglans nigra* L., *Prunus avium* (L.)L., *Tilia cordata* Mill., *Q. agrifolia*, *Q. laurifolia* Michx., *Q. nigra* L., *Q. pagoda* Rafin., *Q. phellos* L., *Q. petraea* (Matt.) Liebl., *Q. robur* L., *Q. rubra* and *Q. virginiana* Mill. were also possible hosts, but less susceptible (Denman *et al.* 2005, Hansen *et al.* 2005, Tooley and Kyde 2007). Among conifers *Abies procera* Rehd., *Pinus halepensis* Mill. and *P. pinea* L., have been severely affected by inoculation with *P. ramorum*, and *Picea abies* (L.) H.Karst, *P. sitchensis* (Bong.) Carr., *Sequoia sempervirens* and *Tsuga heterophylla* (Raf.) Sarg. have also been shown to be susceptible, while *Chamaecyparis lawsoniana* (A. Murray) Parl., *Quercus ilex* and *Taxus baccata* have shown only moderate susceptibility (Denmann *et al.* 2005, Hansen *et al.* 2005, Moralejo *et al.* 2009). Jinek *et al.* (2010) tested eastern Canadian forest tree species, and susceptible hosts included *Fraxinus Americana* L., *Betula alleghaniensis* Britt. and *Abies balsamea* (L.) Mill. Many understory species have also been highly susceptible, e. g. *Vaccinium membranaceum* Douglas ex Torr. and *V. parvifolium* Sm. (Hansen *et al.* 2005). Also some container weed species have been shown to be hosts (Shishkoff 2012). *Phytophthora ramorum* is not yet found in Australia, but 21 native Australian plant species have been shown to be moderately or highly susceptible, and several potential sporulation hosts have been identified (Ireland *et al.* 2012).

P. ramorum has been found in many European countries. See table 1 for *P. ramorum* status in the NOBANIS region.

Country	Not found	Not established	Rare	Local	Common	Very common	Not known
Austria							X
Belgium					X		
Czech republic		X					
Denmark					X		
Estonia		X					
European part of Russia							X
Finland		X					
Faroe Islands							X
Germany					X		
Greenland							X
Iceland	X						
Ireland				X			
Latvia		X					
Lithuania		X					

Netherlands	X
Norway	X
Poland	X
Slovakia	X
Sweden	X

Table 1. The frequency and establishment of *Phytophthora ramorum*, please refer also to the information provided for this species at www.nobanis.org/search.asp. Legend for this table: **Not found** –The species is not found in the country; **Not established** - The species has not formed self-reproducing populations (but is found as a casual or incidental species); **Rare** - Few sites where it is found in the country; **Local** - Locally abundant, many individuals in some areas of the country; **Common** - Many sites in the country; **Very common** - Many sites and many individuals; **Not known** – No information was available.

Ecology

Habitat description

The microbe is regarded as a cool-temperate organism with an optimum temperature for growth at 20°C and minimum and maximum at 2°C and 30°C respectively (Werres *et al.* 2001). In the study by Tooley *et al.* (2008), the lower threshold for its 7-day survival in *Rhododendron* tissue was between 10°C and 20°C, and the higher threshold for chlamydospore survival in moistened sand between 35°C and 40°C. In woody plant material, one week of heat treatment at 55 °C was needed to kill the pathogen (Garbelotto 2004). Wet conditions are needed for sporangia production and successful infection. The pathogen has been found in forests, forest and ornamental nurseries, gardens and parks. At the moment, the habitats affected by the most large-scale *P. ramorum* epidemics are the coastal evergreen oak forests in California and *Larix* plantation forests in Great Britain. In England and Wales, it has been shown that county incidence of *P. ramorum* in semi-natural environments increased with increasing precipitation and with declining latitude (Chadfield and Pautasso 2006). CLIMEX models based on studies on the epidemiological variables have been used to create potential distribution maps for *P. ramorum* establishment in the USA (Venette and Cohen 2006). In Europe, western coastal areas are under the highest risk of *P. ramorum* epidemics (RAPRA 2009).

Reproduction and life cycle

Two types of asexual spores, zoospores (released from sporangia) and chlamydospores, are produced under wet conditions and moderate temperature on infected leaves or twigs. The motile (swimming) zoospores are released from sporangia after landing on susceptible host. They encyst, germinate and penetrate the host tissue, and are thus responsible for new infections. Chlamydospores are the resting structures involved in survival. Under suitable conditions they germinate to produce new hyphae, and in suitable environments, rapid repetition of this asexual cycle can result in epidemics. *P. ramorum* is a heterothallic species and pairing of opposite mating types is needed for sexual reproduction. However, sexual structures, oogonia, antheridia and oospores, have not yet been found in nature. In artificial pairings oospores have been produced (Werres and Zielke 2003, Brasier and Kirk 2004), and later also progenies have been obtained in laboratory conditions (Boutet *et al.* 2010). However, the progenies have been shown to contain phenotypic variation and instability in DNA content due to genotypic

rearrangements (Vercauteren *et al.* 2012b).

Dispersal and spread

P. ramorum differs from the majority of other *Phytophthora* species in being adapted to an aerial lifestyle. The sporangia of the pathogen are caducous, which means that they are detached from the hyphae and transported locally by rain water splashes. Inoculum is transported up in the canopy and further longer distances by turbulent wind and wind driven rain (Hansen *et al.* 2008). In the case of Sudden Oak Death in the US, foliar infections on woody shrubs or other hosts in the understory have been shown to enable the build-up of an enormous inoculum and subsequent efficient spread to oak stems and thus sustain the epidemic (Rizzo *et al.* 2005). Soil from vehicle tires has been shown to contain viable spores of *P. ramorum*. In addition, hikers have been shown to carry spores on their shoes after visits in infested areas during the rainy season (Tjosvold *et al.* 2002). In the case of the epidemic on *Larix* spp., a new disease dynamic has been observed. In “Sudden Larch Death”, the epidemic is not sustained primarily by understory plants like in California; instead *P. ramorum* sporulates efficiently on larch needles high in the tree canopy (Webber *et al.* 2010).

P. ramorum is found relatively often in nurseries, and is thus likely to spread to new locations within a country by infected planting material. It can also spread further into surrounding environment from gardens and parks, which has happened in California, and is suspected for example in the case of bilberry infection in Norway (Herrero *et al.* 2011). In the US, population genetic analysis have revealed migration pathways, that are in agreement with trace forward analyses based on plant shipment routes (Goss *et al.* 2009b). It was also inferred that only a few genotypes are responsible for initiating the infestations across the country. Bark beetles and ambrosia beetles are commonly found on diseased trees but their potential role as vectors has not been studied yet (McPherson *et al.* 2005). Long-range spread of the pathogen appears to be linked to favourable weather patterns (El Nino in California, Filipe *et al.* 2012) and new introduction events (Kliejunas *et al.* 2010). New introduction events between countries primarily occur via international plant trade (Moralejo and Werres 2002, Brasier 2008, Hansen 2007, Santini *et al.* 2012).

Although *P. ramorum* infects the above-ground parts of host plants, it has been also found in the roots of symptomless commercial nursery plants (Vercauteren *et al.* 2013). *P. ramorum* was also experimentally shown to persist in symptomless *Rhododendron* root balls for at least 8 months and in rootless substrates at least 33 months (Vercauteren *et al.* 2013). This symptomless presence in root balls and potting media can contribute to latent spread of this pathogen between nurseries.

Impact

Affected habitats and indigenous organism

Phytophthora ramorum affects the aerial parts of plants and disease symptoms are diverse depending on the plant species. On woody shrubs or small trees such as *Rhamnus* and many other understory hosts such as *Rhododendron*, *P. ramorum* mainly causes leaf lesions or/and twig blight. On *Camellia*, *Griselinia*, *Kalmia*, *Laurus*, *Leucothoe*, *Photinia* and *Syringa* the pathogen causes brown to black leaf lesions (Orlikowski and Szuta 2004, Vettraino *et al.* 2006, DEFRA 2010, Forestry Commission 2013). On *Calluna* apical shoot parts turned brown and infected shoots might have shepherd crook shape (Orlikowski and Szuta 2004). In larger trees, bark infections cause cankers with tarry or rusty colored exudations. The leaves of infected trees may turn brown over a short period, but death may take one or

more years (Garbelotto *et al.* 2001). On *Notholithocarpus densiflorus*, the pathogen affects both bark and leaves and death can be rapid. On *Viburnum*, the stem base infection cause wilting and death.

On *Larix* spp., symptoms include black or purple discoloured needles, aborted bud flush, wilting and senescence of dwarf shoots and needle loss. Trees can also often have copious resin bleeding on the trunk, branches and side shoots, in addition to dieback of branches and sometimes of the entire crown. Deep pink to brown phloem lesions are often present under resinous outer bark (Webber *et al.* 2010).

The impact of *P. ramorum* differs depending on the ecosystem and host. In susceptible natural and semi-natural forests, extensive mortality of trees and shrubs can have severe short- and long-term ecological consequences, including significant changes in the structure and composition of the plant and animal communities, as well as increased water run-off and associated soil erosion.

Genetic effects

No genetic effects.

Human health effects

No human health effects have been reported.

Economic and societal effects (positive/negative)

The economic and social impacts of *P. ramorum* have been considerable especially in the US (Kovacks *et al.* 2011) and more recently in the UK. The significant economic impact upon these forest ecosystems results from costs of monitoring and eradication measures, as well as reductions in recreational, cultural, or commodity value. In the US, the most large-scale environmental impact of *P. ramorum* has occurred with the Sudden Oak Death in the coastal woodlands of California and southwestern Oregon. In the UK, the disease has been found mostly on larch trees at over 140 sites and over 4 million trees have been felled. In Ireland, *P. ramorum* has been found in 11 forest sites in 2010. Many noble fir (*Abies procera*), beech (*Fagus sylvatica*) and Spanish chestnut (*Castanea sativa*) trees as well as a single sitka spruce (*Picea sitchensis*) growing in the proximity to the infected larch have also been found to be infected in Ireland (Dept. of Agriculture, Food and the Marine 2011). In nurseries, the economic impacts of *P. ramorum* include losses due to quarantine restrictions and mandatory destruction of infested ornamentals, as well as trade losses.

Many produced plant species in the ornamental nursery industry are known as hosts for *P. ramorum*, and many ecologically and environmentally important woody species have also been hosts or highly susceptible in inoculations. Thus, with the growing international plant trade, more introductions of *P. ramorum* genotypes continue to increase the probability of new outbreaks and epidemics in Europe.

Management approaches

Prevention methods

The spread of *P. ramorum* and its new genotypes into new geographical areas by plant trade should be avoided. The European Commission Decision 2004/426/EC imposes strict import regulations for the host plants of *P. ramorum*. However, the regulation protocols do not completely guarantee prevention of introduction (Brasier 2008), and thus new approaches for regulation are needed.

Eradication, control and monitoring efforts

Management of *P. ramorum* in nurseries through IPM (intergrated pest management) practices include cultural practices, fungicides, and host resistance (Orlikowski 2004, James *et al.* 2012). According to the EU Commission Regulation 2004/426/EC, the national plant protection services are required to sample plants with suspected infections of *P. ramorum* and destroy infected plants together with all other host plants within a 2 m radius. Trade from infected nurseries is suspended and further inspections are required before trade can resume.

Extensive surveys to screen for the presence of *P. ramorum* have been done both in Europe and North America (Forestry Commission 2013, USDA 2012).

Information and awareness

Information to nurseries, environmental managers and the general public on the environmental effects and management of *P. ramorum* is spread by the National Plant Protection Service in each country through information on the Internet.

Knowledge and research

None reported.

Recommendations or comments from experts and local communities

None reported.

References and other resources

Contact persons

Mgr. Karel Černý, Department of Phytopatology, VUKOZ, Květnové náměstí 391, 252 43 Průhonice, E-mail: cerny@vukoz.cz

Iben M. Thomsen (DK) Institut for Geovidenskab og Naturforvaltning, Københavns Universitet Rolighedsvej 23, 1958 Frederiksberg C, Phone +4535331664 or +4522270500, E-mail: imt@life.ku.dk

Anna Poimala (FI), Finnish Forest Research Institute, Vantaa Research Unit, PO Box 18, 01301 Vantaa, Finland; +358 408015377 ; E-mail: anna.poimala@metla.fi

Sabine Werres (DE), Federal Biological Research Centre for Agriculture and Forestry, Institute for Plant Protection in Horticulture, Messeweg 11712, D – 38104 Braunschweig. E-mail: S.Werres@BBA.de

Halldór Sverrisson (IS) Plant pathologist, Agricultural University of Iceland, and Iceland Forest Research, E-mail: halldors@lbhi.is

Agita Pence (LV), State Plant Protection Service, Plant Quarantine Department, Lielvārdes iela 36/38, LV-1006 Riga, E-mail: agita.pence@vaad.gov.lv

Leszek B. Orlikowski (PL), Research Institute of Pomology and Floriculture, Division of Floriculture, Department of Protection of Ornamental Plants, ul. Pomologiczna 18; 96-100 Skierniewice, phone +48 046 8332021, E-mail: Leszek.Orlikowski@insad.pl

Swedish Plant Protection Service (SE), Box 19, 230 53 Alnarp, tel: +46 40 53 66 30 fax +46 40 53 66 39 E-mail: vaxinspektionen.alnarp@sjv.se

Links

A project within the EU 6th Framework R & D Programme, priority 8.1.B.1. Sustainable management of Europe's natural resources. RAPRA. [Risk analysis for *Phytophthora ramorum*](#).

Bundeanstalt für Land und Forstwirtschaft (BBA). [Phytophthora ramorum](#).

Forestry Commission. [Phytophthora ramorum](#).

Department for Environment Food and Rural Affairs (DEFRA). [A threat to our woodlands, heathlands and historic gardens, *Phytophthora ramorum*](#).

European and Mediterranean Plant Protection Organisation (EPPO). [Phytophthora ramorum](#).

Invasive Species Specialist Group (ISSG). [Phytophthora ramorum](#).

Swedish Board of Agriculture. [Phytophthora ramorum angriper rhododendron och många andra arter](#).

Agricultural Board of Estonia. [Tamme-äkkisurm, *Phytophthora ramorum*](#).

United States Department of Agriculture (USDA). The Animal and Plant Health Inspection Service (APHIS). [Phytophthora ramorum/Suddean Oak Death](#).

References

- Agricultural Board of Estonia, 2010. Reports of plant health monitoring programme of harmful organisms (in Estonian). <http://www.pma.agri.ee/>.
- Anonymous 2004. *Phytophthora ramorum* in Amerikaanse eik. 2004. Gewasbescherming 35(2): 126.
- Beales, P.A., Brokenshire, T., Barnes, A.V., Barton, V.C. & Hughes, K.J.D. 2004a. First report of ramorum leaf blight and dieback (*Phytophthora ramorum*) on Camellia spp. in the UK. Plant Path. 53: 524.
- Beales, P.A., Schlenzig, A. & Inman, A.J. 2004b. First report of ramorum bud and leaf blight (*Phytophthora ramorum*) on syringa vulgaris in the UK. Plant Path. 53: 525.
- Běhalová, 2006. Surveys for *Phytophthora ramorum* in the Czech Republic. EPPO Bulletin 36, 393–395
- Blomquist, C. L., Rooney-Latham, S., & Soriano, M. C., 2012. First report of *Phytophthora ramorum* causing a leafspot on *Loropetalum chinense*, chinese fringe flower in California. Plant Dis. 96: 1829-1829.
- Boutet, X., Vercauteren, A., Heungens, K., Laurent, F., Chandelier, A. 2010. Oospore progenies from *Phytophthora ramorum*. Fungal Biol. 114: 369–378.
- Brasier, C. 2008. The biosecurity threat to the UK and global environment from international trade in plants. Plant Pathol. 57: 792–808.
- Brasier, C.M. 2003. Sudden oak death exhibits transatlantic differences. Mycol. Res. 107: 258-259.
- Brasier C.M. & Kirk, S. 2004. Production of gametangia by *Phytophthora ramorum* in vitro. Mycol. Res. 108: 823-827.
- Brasier, C. & Webber, J. 2010. Plant pathology: Sudden larch death. Nature 466: 824–825.
- Brasier, C.M.; Vettraino, A.M.; Chang, T.T.; Vannini, A. 2010. *Phytophthora lateralis* discovered in an old growth *Chamaecyparis* forest in Taiwan. Plant Pathol. 59: 595-603.
- Brasier, C.M., Denman, S., Rose, J., Kirk, S.A., Hughes, K.J.D., Griffin, R.L., Lane, C.R., Inman, A.J. & Webber, J.F. 2004. First report of ramorum bleeding canker on *Quercus falcata* caused by *Phytophthora ramorum*. Plant Path. 53: 804.
- Bulajić, A., Djekić, I., Jelena Jović, J. & Krnjajić, S. 2010. *Phytophthora ramorum* Occurrence in ornamentals in Serbia. Plant Dis. 94: 703-708.

- Chadfield, V.; Pautasso, M. 2006. *Phytophthora ramorum* in England and Wales: which environmental variables predict county disease incidence? For. Pathol. 42:150-159.
- Commission Decision 2002/757/EC. Commission Decision of 19 September 2002 on provisional emergency phytosanitary measures to prevent the introduction into and the spread within the Community of *Phytophthora ramorum* Werres, De Cock & Man in 't Veld sp. nov. (notified under document number C(2002) 3380).
- Davidson, J.M., Garbelotto, M., Koike, S.T. & Rizzo, D.M. 2002. First report of *Phytophthora ramorum* on Douglas fir in California. Plant Dis. 86: 1276.
- Davidson, J.M., Wickland, A. C., Patterson, H.A., Falk, K.R. & Rizzo, D.M. 2005. Transmission of *Phytophthora ramorum* in mixed-evergreen forest in California. Phytopath. 95: 587-596.
- Delatour, C., Saurat, C., Husson, C., Loos, R. & Schenk, N. 2002. Discovery of *Phytophthora ramorum* on *Rhododendron* sp. in France and experimental symptoms on *Quercus robur*. Sudden Oak Death Science Symposium 15-18 December 2002, Monterey, CA.
- De Merlier, D., Chandelier, A. & Caverlier, M. 2003. First report of *Phytophthora ramorum* on *Viburnum* in Belgium. Plant Dis. 87: 203.
- Denman, S. Kirk, S.A., Brasier, C.M. & Webber, J.F. 2005. In vitro leaf inoculation studies as an indication of tree foliage susceptibility to *Phytophthora ramorum* in the UK. Plant Pathology 54: 512-521.
- Department for Environment Food and Rural Affairs (DEFRA) 2010. [A threat to our woodlands, heathlands and historic gardens, *Phytophthora ramorum*](#).
- Department of Agriculture, Food and the Marine 2011. Press release: Update on *Phytophthora ramorum* Monitoring. <http://www.agriculture.gov.ie/press/pressreleases/2011/march/title,52517,en.html>
- EPPO 2011/244: Situation of *Phytophthora ramorum* in Croatia. EPPO Reporting Service No. 11, Available at: <http://archives.eppo.int/EPPOreporting/2011/Rse-1111.pdf>
- Filipe, J.A.N., Cobb, R.C., Meentemeyer, R.K., Lee, C.A., Valachovic, Y.S., Cook, A.R., Rizzo, D.M. & Gilligan, C.A. 2012. Landscape epidemiology and control of pathogens with cryptic and long-distance dispersal: Sudden Oak Death in Northern Californian forests. PLoS Comput. Biol. 8:e1002328.
- Forestry Commission. 2013. [Phytophthora ramorum](#).
- Garbelotto, M. 2004. Composting as a control for sudden oak death disease. Journal of Composting & Organics, February: 53-58.
- Garbelotto, M., Svihra, P. & Rizzo, D.M. 2001. Sudden oak death syndrome fells tree oak species. Calif. Agric. 55(1): 9-19.
- Goheen, E.M., Hansen, E.M., Kanaskie, A., McWilliams, M.G., Osterbauer, N. & Sutton, W. 2002. Sudden Oak death caused by *Phytophthora ramorum* in Oregon. Plant Dis. 86: 441.
- Goss, E.M., Carbone, I., & Grünwald, N.J. 2009a. Ancient isolation and independent evolution of the three clonal lineages of the exotic sudden oak death pathogen *Phytophthora ramorum*. Mol. Ecol. 18: 1161-1174.
- Goss, E.M., Larsen, M.M., Chastanger, G.A., Givens, D.R. & Grünwald, N.J. 2009b. Population genetic analysis infers migration pathways of *Phytophthora ramorum* in US nurseries. Plos Pathol. 5:e
- Goss, E.M., Larsen, M., Vercauteren, A., Werres, S., Heungens, K. & Grünwald, N.J. *Phytophthora ramorum* in Canada: Evidence for Migration within North America and from Europe. Phytopath. 101: 166-171.
- Grünwald, N., Garbelotto, M., Goss, E.M., Heungens, K. & Prospero, S. 2012. Emergence of the sudden oak death pathogen *Phytophthora ramorum*. Trends in Microbiol. 20: 131–138.
- Hansen, E. 2007. Alien forest pathogens: *Phytophthora* species are changing world forests. Boreal Environment Research 13:33-41.
- Hansen, E.M., Reeser, P.W., Sutton, W., Winton, L. & Osterbauer, N. 2003. First report of A1 mating type in North America. Plant Dis. 87: 1267.
- Hansen, E.M., Parke, J.L. & Sutton, W. 2005. Susceptibility of Oregon forest trees and shrubs to *Phytophthora ramorum*: a comparison of artificial inoculation and natural infection. Plant Dis. 89: 63-70.
- Hansen, E., Kanaskie, A., Prospero, S., McWilliams, M., Goheen, E.M., Osterbauer, N., Reeser, P. & Sutton, W. 2008. Epidemiology of *Phytophthora ramorum* in Oregon tanoak forests. Can. J. For. Res. 38:1133-1143.
- Heiniger, U., Theile, F. & Stadler, B. 2004. Erstfund von *Phytophthora ramorum* in Switzerland. Scheizerische Zeitschrift für Forstwesen. 155: 53-54.
- Herrero, M.L., Toppe, B., Klemsdal, S.S., Stensvand, A. 2006, First report of *Phytophthora ramorum* in ornamental plants in Norway. Plant Dis. 90:1458.
- Herrero, M.L., Toppe, B. & Brurberg, M.B. 2011. First Report of *Phytophthora ramorum* causing shoot dieback on bilberry (*Vaccinium myrtillus*) in Norway. Plant Dis. 95:355.

- Hong, C. 2003. Sudden oak death. Virginia Cooperative Extension, Publication 450-801. Virginia State University, Virginia, 4 p.
- Husson, C., Delatour, C., Frey, P. & Marçais, b. 2007. First report of *Phytophthora ramorum* on ornamental plants in France. *Plant Dis.* 91:1359.
- Hüberli, D., Reuther, K.D., Smith, A., Swain, S & Tse, J.G. 2004. First report of foliar infection of *Rosa gymnocarpa* by *Phytophthora ramorum*. *Plant Dis.* 88: 430.
- Hüberli, D., Ivors, K.L., Smith, A., Tse, J.G. & Garbelotto, M. 2005. First report of foliar infection of *Maianthemum racemosum* by *Phytophthora ramorum*. *Plant Dis.* 89: 204.
- Ireland, K.B., Huberli, D., Dell, B., Smith, I.W., Rizzo, D.M. & Hardy, G.E.St.J. 2012 Potential susceptibility of Australian flora to a NA2 isolate of *Phytophthora ramorum* and pathogen sporulation potential. *For. Pathol.* 42: 305-320.
- Ivors, K., Garbelotto, M., Vries, I.D.E., Ruyter-Spira, C., Hekkert, B. TE., Rosenzweig, N. & Bonants, P. 2006. Microsatellite markers identify three lineages of *Phytophthora ramorum* in US nurseries, yet single lineages in US forest and European nursery populations. *Molecular Ecology* 15: 1493–1505.
- James, D., Varga, A., Becker, E., Sumampong, G., Bailey, K., Elliott, M., Masri, S. & Shamoun, S.F. 2012. Screening of several disinfectants to assess their efficacy in controlling mycelia growth, sporangia germination, and recovery of viable *Phytophthora ramorum*. *Crop Protection* 42:186–192.
- Jinek, A., Simard, M., Briere, S. C., Watson, A. K., Tweddell, R. J. & Rioux, D. 2010. Foliage susceptibility of six eastern Canadian forest tree species to *Phytophthora ramorum*. *Can. J Plant Pathol.* 1: 26-37.
- Kliejunas, J.T. 2010. Sudden Oak Death and *Phytophthora ramorum*: A summary on the Literature. 2010 Edition. Gen. Tech. Rep. PSW-GTR-234. Albany, CA: Department of Agriculture, Forest Service, Pacific Southwest Research Station. 181 pp.
- Knight, J. 2002. Fears mount as oak blight infects redwoods. *Nature* 415: 251.
- Kovacs, K., Václavík, T., Haight, R.G., Pang, A., Cunniffe, N.J., Gilligan, C.A. & Meentemeyer, R.K. 2011. Predicting the economic costs and property value losses attributed to sudden oak death damage in California (2010-2020). *J. Environ. Manage.* 92:1292-302.
- Lane, C.R., Beales, P.A., Hughes, K.J.D., Tomlinson, J.A., Inman, A.J. & Warwick, K. 2004. First report of ramorum dieback (*Phytophthora ramorum*) on container-grown English yew (*Taxus baccata*) in England. *Plant Path.* 53: 522.
- Lilja, A., Rytönen, A., Kokkola, M., Parikka, P., Hantula, J. 2007. First report of *Phytophthora ramorum* and *P. inflata* in ornamental rhododendrons in Finland. *Plant Dis.* 91:1055.
- Maloney, P.E., Lynch, S.C., Kane, S.F., Jensen, S.F. & Rizzo, D.M. 2005. Establishment of an emerging generalist pathogen in redwood forest communities. *J. Ecol.* 93(5): 899-905.
- Mascheretti, S., Croucher, P.J.P., Vettraino, A., Prosepero, S. & Garbelotto, M. 2008. Reconstruction of the Sudden Oak Death epidemic in California through microsatellite analysis of the pathogen *Phytophthora ramorum*. *Molecular ecology* 17: 2755-2768.
- McPherson, B.A., Mori, S.R., Wood, D.L., Storer, A.J, Svihra, P., Kelly, N.M. & Standiford, R.B. 2005. Sudden oak death in California: disease progression in oaks and tanoaks. *For. Ecol. Managem.* 213: 71-89.
- Moralejo, E. & Werres, S. 2002. First report of *Phytophthora ramorum* on *Rhododendron* in Spain. *Plant Dis.* 86: 1052.
- Moralejo, E., Garcia-Munoz, J. A. & Descals, E. 2009. Susceptibility of Iberian trees to *Phytophthora ramorum* and *P. cinnamomi*. *Plant Pathol.* 58: 271-283.
- Murphy, S.K. & Rizzo, D.M. 2003. First report on canyon live oak in California. *Plant Dis.* 87: 315.
- Orlikowski L.B. 2004. Chemical control of rhododendron tip blight caused by *Phytophthora ramorum*. *J. Plant Prot. Res.* 44(1): 41-46.
- Orlikowski L.B. 2005. New hosts of *Phytophthora ramorum* in Poland; occurrence and plant colonisation. *IOBCwprs Bull.* 28(1): 191-194.
- Orlikowski, L.B. & Szkuta, G. 2002. First record of *Phytophthora ramorum* in Poland. *Phytopathologia Polonica* 25: 69-79.
- Orlikowski L.B., Szkuta G. 2004: First notice of *Phytophthora ramorum* on *Calluna vulgaris*, *Photinia fraseri* and *Pieris japonica* in Polish container-grown ornamental nurseries. *Phytopathol. Pol.* 33: 87-92.
- Orlikowski L.B., Skrzypczak Cz., Szkuta G. 2004. Zagrożenie roślin przez *Phytophthora ramorum* w Polsce i na świecie. *Progress in Plant Prot.* 45(2): 966- 969.
- Pintos, C., Mansilla, J.P. & Agúin, O. 2004. *Phytophthora ramorum* nuevo patógeno en España sobre *Camellia japonica* y *Viburnum tinus*. *Bol. San. Veg. Plagas* 30: 97-111.
- Prospero, S., Hansen, E., Grünwald, N.J., Winton, L.M. 2007. Population dynamics of the sudden oak death pathogen

- Phytophthora ramorum* in Oregon from 2001 to 2004. *Molecular Ecol.* 16: 2958–2973.
- RAPRA, Risk analysis of *Phytophthora ramorum*, a newly recognised pathogen threat to Europe and the cause of Sudden Oak Death in the USA 2009. EU Sixth Framework Project, deliverable report D28. Available at: http://rapra.csl.gov.uk/RAPRA-PRA_26feb09.pdf.
- Rizzo, D.M., Garbelotto, M., Davidson, J.M. & Slaughter, G.W. 2002. *Phytophthora ramorum* as the cause of extensive mortality of *Quercus* spp. and *Lithocarpus densiflorus* in California. *Plant Dis.* 86: 205-214.
- Rizzo, D.M., Garbelotto, M. & Hansen, E.A. 2005. *Phytophthora ramorum*: Integrative research and management of an emerging pathogen in California and Oregon forests. *Ann. Rev. Phytopath.* 43: 309-335.
- Sansford, C., Inman, A. & Webber, J. 2010. Development of a Pest Risk Analysis for *Phytophthora ramorum* for the European Union; the key deliverable from the EU-funded project RAPRA. In: Proceedings of the Sudden Oak Death Fourth Science Symposium. Ed. by Frankel, S. J.; Kliejunas, J. T.; Palmieri, K. M. PSW-GTR-229. Albany, CA: USDA FS, pp. 139–153.
- Santini, A., Ghelardini, L., De Pace, C., Desprez-Loustau, M. L., Capretti, P., Chandelier, A., Cech, T., Chira, D., Diamandis, S., Gaitniekis, T., Hantula, J., Holdenrieder, O., Jankovsky, L., Jung, T., Jurc, D., Kirisits, T., Kunca, A., Lygis, V., Malecka, M., Marçais, B., Schmitz, S., Schumacher, J., Solheim, H., Solla, A., Szabò, I., Tsopeles, P., Vannini, A., Vettraino, A. M., Webber, J., Woodward, S. & Stenlid J. 2013. Biogeographical patterns and determinants of invasion by forest pathogens in Europe. *New Phytologist* 197:238-250.
- Shishkoff, N. 2012. Susceptibility of some common container weeds to *Phytophthora ramorum*. *Plant Dis.* 96:1026-1032.
- Swedish Board of Agriculture. 2011. [Phytophthora ramorum angriper rhododendron och många andra arter.](#)
- Tjosvold, S.A., Chambers, D.L., Davidson, J.M. & Rizzo, D.M. 2002. Incidence of *Phytophthora ramorum* inoculum found in soil collected from a hiking trail and hiker's shoes in a California park. Sudden Oak Death Science Symposium 15-18 December 2002, Monterey, CA.
- Tsopeles, P., Paplomatas, E., Tjamos, S.E., Soulioti, N., Elena, K. 2011. First report of *Phytophthora ramorum* on *Rhododendron* in Greece. *Plant Disease* 95(2), p 223.
- Tooley, P.W. & Kyde, K.L. 2007. Susceptibility of some Eastern forest species to *Phytophthora ramorum*. *Plant Dis.* 91:435-438.
- Tooley, P.W., Browning, M. & Berner, D. 2008. Recovery of *Phytophthora ramorum* following exposure to temperature extremes. *Plant Dis.* 92: 431-437.
- United States Department of Agriculture (USDA). 2012. The Animal and Plant Health Inspection Service (APHIS). [Phytophthora ramorum/Suddean Oak Death.](#)
- Van Poucke, K., Franceschini, S., Webber, J., Vercauteren, A., Turner, J.A., McCracken, A.R., Heungens, K. & Brasier, C. 2012. Discovery of a fourth evolutionary lineage of *Phytophthora ramorum*: EU2. *Fungal Biol.* 116: 1178-1191.
- Venette, R.C. & Cohen, S.D. 2006. Potential climatic suitability for establishment of *Phytophthora ramorum* within the contiguous United States. *For. Ecol. Managem.* 231:18-26.
- Vercauteren, A., De Dobbelaere, I., Van Bockstaele, E., Maes, M. & Heungens, K. 2011a. Genotypic and phenotypic characterization of the European A2 isolates of *Phytophthora ramorum*. *Eur. J Plant Pathol.* 129: 621-635.
- Vercauteren, A., Boutet, X., D'hondt, L., Van Bockstael, E., Maes, M., Leus, L., Chandelier, A., Heungens, K. 2011b. Aberrant genome size and instability of *Phytophthora ramorum* oospore progenies. *Fungal Gen. Biol.* 48: 537–543.
- Vercauteren, A., Riedel, M., Maes, M., Werres, S., Heungens, K. 2013. Survival of *Phytophthora ramorum* in *Rhododendron* root balls and in rootless substrates. *Plant Pathol.* 62:166-176.
- Vettraino, A. M., Hüberli, D., Swain, S., Smith, A. & Garbelotto, M. 2006. A new report of *Phytophthora ramorum* on *Rhamnus purshiana* in Northern California. *Plant Dis.* 90: 246.
- Webber, J., Mullett, M. & Brasier, C.M. 2010. Dieback and mortality of plantation Japanese larch (*Larix kaempferi*) associated with infection by *Phytophthora ramorum*. *New Disease Reports* 22:19.
- Webber, J.F.; Vettraino, A.M.; Chang, T.T.; Bellgard, S.E.; Brasier, C.M.; Vannini, A. 2012. Isolation of *Phytophthora lateralis* from *Chamaecyparis* foliage in Taiwan. *For. Pathol.* 42: 136-143.
- Werres, S. & De Merlier, D. 2003. First detection of *Phytophthora ramorum* mating type A2 in Europe. *Plant Dis.* 87: 1266.
- Werres, S. & Zielke, B. 2003. First studies on the pairing of *Phytophthora ramorum*. *J. Plant Dis. Prot.* 110: 129-130.
- Werres, S. & Kaminski, K. 2005. Characterisation of European and North American *Phytophthora ramorum* isolates due to their morphology and mating behaviour in vitro with heterothallic *Phytophthora* species. *Mycol. Res.* 109: 860-871.
- Werres, S., Marwitz, R., Man In't Veld, W.A., De Cock, W.A.M., Bonants, P.J.M., De Weert, Themann, K., Ilieva, E. & Baayen, R.P. 2001. *Phytophthora ramorum* sp. nov., a new pathogen on *Rhododendron* and *Viburnum*. *Mycol. Res.* 105: 115-1165.

Žerjav, M., Munda, A., Lane, C.R., Barnes, A.V. & Hughes, K.J.D. 2004. First report of *Phytophthora ramorum* on container-grown plants of *Rhododendron* and *Viburnum* in Slovenia. *Plant Path.* 53: 523.

Date of creation/modification of this species fact sheet: 03-11-2006/ 03-06-2013.